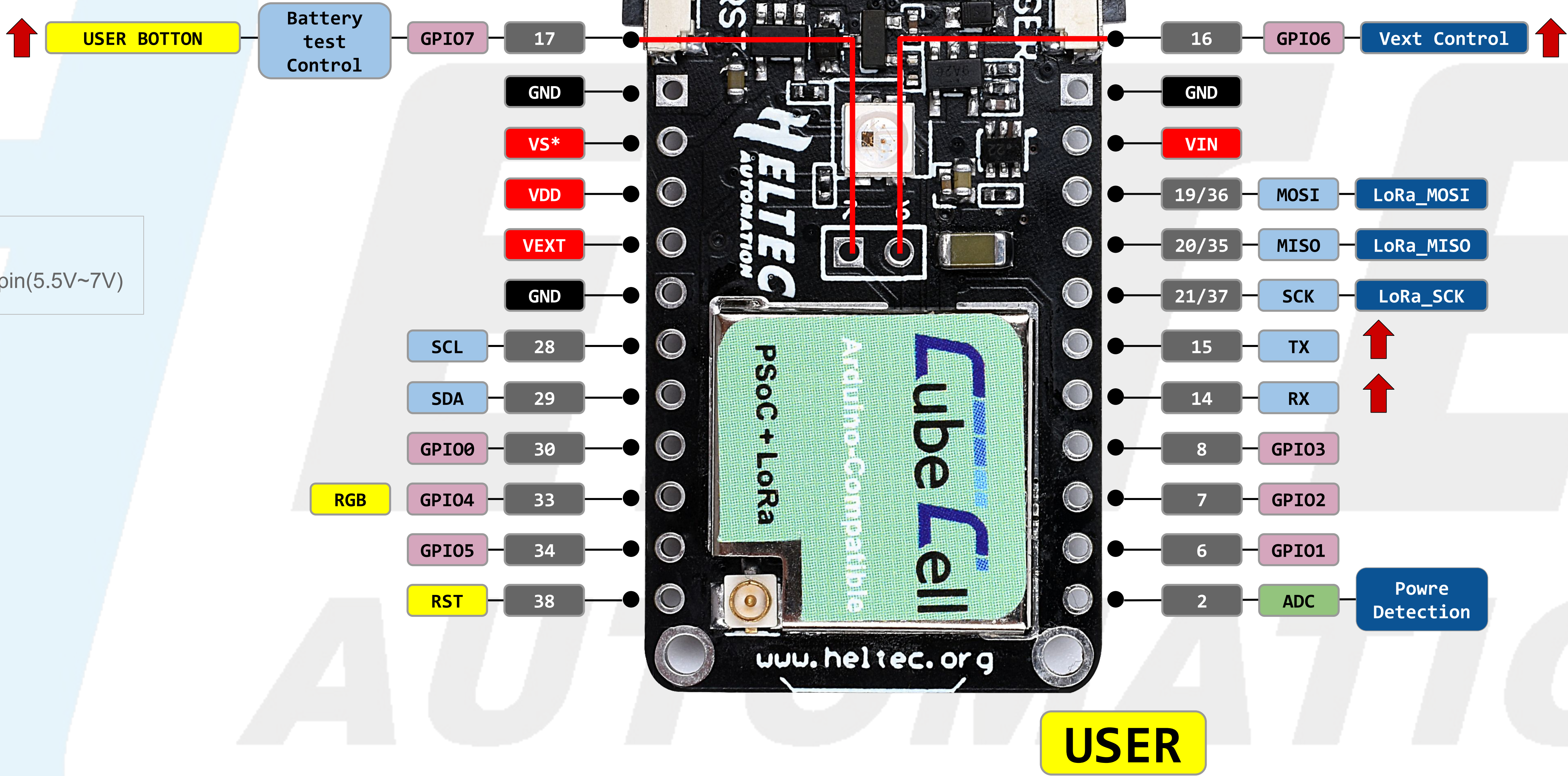


CubeCell HTCC-AB01 Pinout Diagram

Notes:
VS* : Solar input pin(5.5V~7V)



- GND
- Power
- Control
- Touch Pin
- GPIO Port pin
- Analog Pin
- DAC
- Serial SPI I2C
- Physical Pin
- On-board hardware Pin

↑ PULL-UP