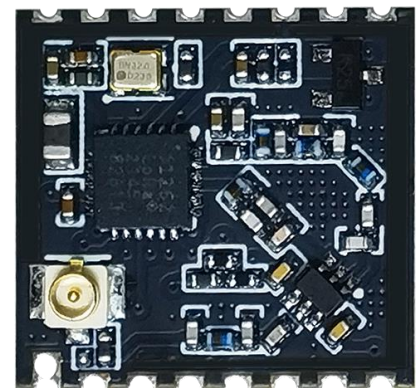




HT-RA62

LoRa module





Document version

Version	Time	Description	Remark
Rev. 1.0	2022-8-16	Preliminary version	肖鸿
Rev. 1.1	2022-9-17	Typographic modification	Aaron

Copyright Notice

All contents in the files are protected by copyright law, and all copyrights are reserved by Chengdu Heltec Automation Technology Co., Ltd. (hereinafter referred to as Heltec). Without written permission, all commercial use of the files from Heltec are forbidden, such as copy, distribute, reproduce the files, etc., but non-commercial purpose, downloaded or printed by individual are welcome.

Disclaimer

Chengdu Heltec Automation Technology Co., Ltd. reserves the right to change, modify or improve the document and product described herein. Its contents are subject to change without notice. These instructions are intended for you use.



Content

HT-RA62.....	1
Document version.....	2
Copyright Notice.....	2
Disclaimer.....	2
Content.....	3
1. Description.....	4
1.1 Overview.....	4
1.2 Product features.....	4
2. Pin Definition.....	5
2.1 Pin assignment.....	5
2.2 Pin description.....	5
3. Specifications.....	6
3.1 General specifications.....	6
3.2 Electrical characteristics.....	7
3.2.1 Power supply.....	7
3.3 RF characteristics.....	7
3.3.1 Transmit power.....	7
3.3.2 Receiving sensitivity.....	7
3.4 Operation frequencies.....	8
4. Hardware resource.....	9
4.1 Physical dimensions.....	9
5. Resource.....	10
5.1 Relevant Resource.....	10
5.2 Contact Information.....	10



1. Description

1.1 Overview

HTIT-RA62 is a LoRa node module based on SX1262.

SX1262 sub-GHz radio transceivers are ideal for long range wireless applications. The maximum output power can reach 22dBm, support LoRa® modulation for LPWAN use cases and (G)FSK modulation for legacy use cases. Continuous frequency coverage from 150 MHz to 960 MHz allows the support of all major sub-GHz ISM bands around the world.

HT-RA62 are available in two product variants:

Table 1.1: Product model list

No.	Model	Description
1	HT-RA62-LF	470~510MHz working LoRa frequency, used for China mainland (CN470) LPW band.
2	HT-RA62-HF	For EU868, IN865, US915, AU915, AS923, KR920 and other LPW networks with operating frequencies between 863~928MHz.

1.2 Product features

- Support FSK, GFSK, MSK, GMSK and LoRa™ and OOK modulation mode;
- Support frequency: 150 ~ 960 MHz;
- Maximum output power 22dBm;
- High sensitivity: as low as - 134dbm;
- Stamp hole package;
- SPI interface.

<https://heltec.org>



2. Pin Definition

2.1 Pin assignment



	Physical Pin
	Power
	GND
	GPIO
	ADC/DAC
	Serial SPI I2C
	Connected
	Other
	Pull Up/Down

HT-RA62 Pin map



2.2 Pin description

Table 2.2: Pin description

No.	Name	Type	Function
1	ANT	O	LoRa ANT Output.
2	GND	P	Ground.
3	3V3	P	3.3V Power supply.
4	RST	I	LoRa RST.
5	TXEN	I	RF Control pin.
6	DIO1	I/O	DIO1 Configuration.
7	DIO2	I/O	DIO2 Configuration.

<https://heltec.org>



8	DIO3	I/O	DIO3 Configuration.
9	GND	P	Ground.
10	BUSY	I/O	LoRa BUSY.
11	RXEN	I	RF Control pin.
12	SCK	I/O	LoRa SCK.
13	MISO	I/O	LoRa MISO.
14	MOSI	I/O	LoRa MOSI.
15	NSS	I/O	LoRa NSS
16	GND	P	Ground.

3. Specifications

3.1 General specifications

Table 3.1: General specifications

Parameters	Description
LoRa Node Chip	SX1262
Frequency	470~510 MHz, 863~928 MHz
Max. TX Power	21 ± 1 dBm
Max. Receiving sensitivity	-134 dBm
Interface	LoRa ANT (IPEX 1.0); 1.27 spacing Stamp hole
Operating temperature	-40 ~ 85 °C
Dimensions	16 * 17* 0.8 mm
Package	Tape & Reel Packaging



3.2 Electrical characteristics

3.2.1 Power supply

Table 3.2.1: Power supply

Power supply mode	Minimum	Typical	Maximum	Company
3V3 pin ($\geq 150\text{mA}$)	2.7	3.3	3.5	V

3.3 RF characteristics

3.3.1 Transmit power

Table3.3.1: Transmit power

Operating frequency band (MHz)	Maximum power value/[dBm]
470~510	21 ± 1
863~870	21 ± 1
902~928	21 ± 1

3.3.2 Receiving sensitivity

The following table gives typically sensitivity level of the HT-RA62.

Table3.3.2: Receiving sensitivity

Signal Bandwidth/[KHz]	Spreading Factor	Sensitivity/[dBm]
125	SF12	-139
125	SF10	-130
125	SF7	-124



3.4 Operation frequencies

HT-RA62 supports LoRaWAN frequency channels and models corresponding table.

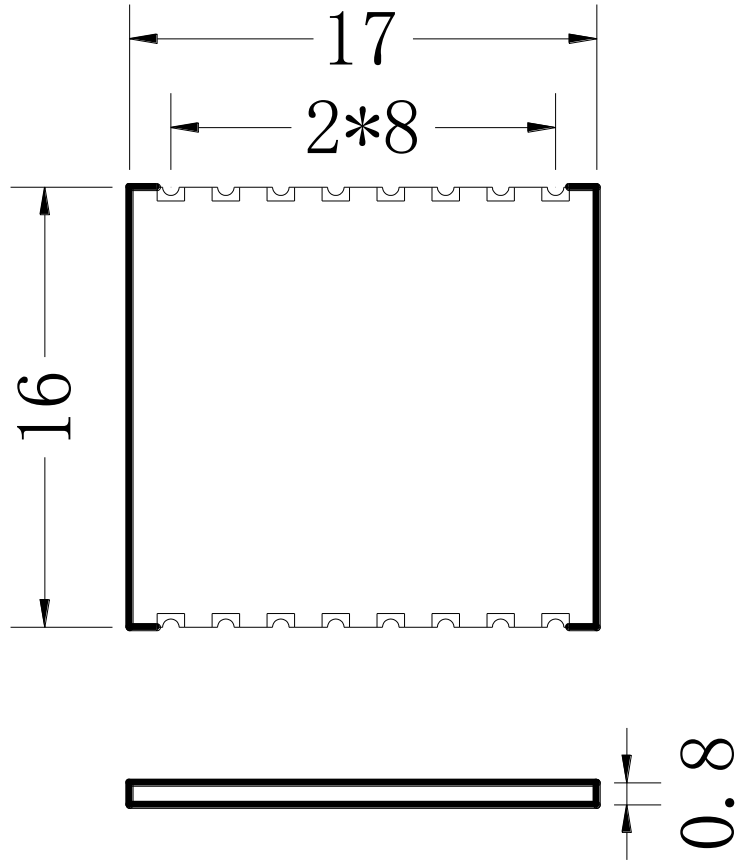
Table3.4: Operation frequencies

Region	Frequency (MHz)	Model
EU433	433.175~434.665	HT-RA62-LF
CN470	470~510	HT-RA62-LF
IN868	865~867	HT-RA62-HF
EU868	863~870	HT-RA62-HF
US915	902~928	HT-RA62-HF
AU915	915~928	HT-RA62-HF
KR920	920~923	HT-RA62-HF
AS923	920~925	HT-RA62-HF

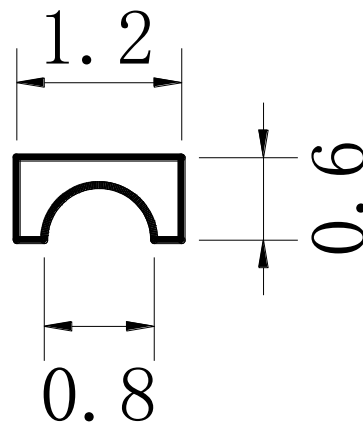


4. Hardware resource

4.1 Physical dimensions



PAD





5. Resource

5.1 Relevant Resource

- [Recommend hardware design](#)
- [Schematic diagram](#)
- [Pin map](#)
- [Downloadable resource](#)
- [Footprint](#)

5.2 Contact Information

Heltec Automation Technology Co., Ltd

Chengdu, Sichuan, China

Email: support@heltec.cn

Phone: +86-028-62374838

<https://heltec.org>